

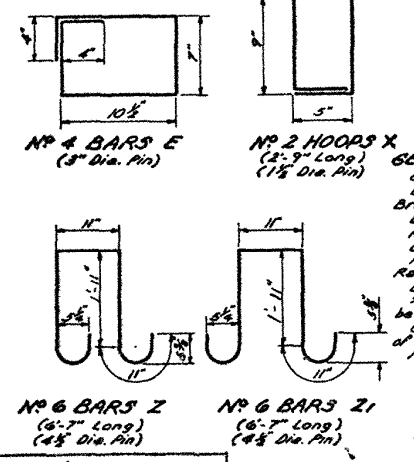
REQUIRED:
One drain each side of roadway near & of span, except when span is super-elevated greater than 0.026 ft per ft. Then put two drains on low side of roadway near 1/2 points of span. No drains required in end spans over depressed slabs. Block used for forming openings may be slightly tapered to facilitate withdrawal.

NOTE A:
After completing pour for roadway slab a minimum of 3 days shall elapse (or Conc. in roadway slab shall attain a min. compressive strength of 1500 p.s.i.) before beginning pour for sidewalk cantilever.

NOTE B:
After completing pour for sidewalk cantilever a minimum of 7 days shall elapse (or Conc. in sidewalk cantilever shall attain a min. compressive strength of 3000 p.s.i.) before beginning pour for handrail.

| QUANTITIES (ONE SPAN) | | | | | |
|---|------|----|-------------|-----------------|------------------------|
| BAR | SIZE | NO | UNIT LENGTH | TOTAL LENGTH | LOCATION |
| A | #9 | 35 | 20'-11" | 732'-1" | Bottom of Slab |
| A1 | #9 | 32 | 19'-6" | 624'-0" | Bottom of Slab |
| TOTAL #9 BARS | | | | 1356'-1" | = 4611 LBS. |
| B | #6 | 17 | 43'-3" | 735'-3" | Bottom of Slab |
| TOTAL #6 BARS | | | | 735'-3" | = 1104 LBS. |
| C | #4 | 15 | 43'-6" | 652'-6" | Top of Slab |
| D | #4 | 35 | 19'-7" | 685'-5" | Top of Slab & Sidewalk |
| E | #4 | 40 | 3'-7" | 143'-4" | Handrail Parapet |
| F | #4 | 52 | 4'-5" | 229'-8" | Sidewalks & Slab |
| F1 | #4 | 2 | 4'-5" | 8'-6" | Sidewalks & Slab |
| TOTAL #4 BARS | | | | 1719'-5" | = 1149 LBS. |
| TOTAL DEFORMED REINFORCING STEEL | | | | | = 6864 LBS. |
| TOTAL CLASS "A" CONCRETE | | | | | = 2294 CU YDS. |
| TOTAL CONCRETE HANDRAIL | | | | | = 39.0 LIN. FT. |

* Length Includes One - 2'-2" Lap Splice.
 @ Length Includes One - 1'-6" Lap Splice.



VOID
 BY _____
 DATE JUL 23 1963

GENERAL NOTES:
 CONSTRUCTION SPECIFICATIONS local approved to Dept. of Highways, Std. Specifications DESIGN SPECIFICATIONS, A.A.S.H.O. Std. Specifications for Highway Bridges, 1961, as amended to Sept. 1961.
 LIVE LOAD: H20-S16-44.
 All concrete to be Class "A".
 Exposed corners to have 3/8" chamfer, unless otherwise noted.
 Reinforcing bars shall be intermediate or hard grade, A.S.T.M. A15, or Rail Steel, A.S.T.M. A16, conforming with A.S.T.M. A305.
 Dimensions relating to reinforcing steel are to bar centers.
 1/2" precast expansion material, poured filler and tar paper to be included in price bid for Class "A" concrete.
 Concrete and reinforcing steel in handrail to be paid for per lin. ft. of concrete handrail. This includes bars Z & Z1.
 R = denotes Class 2 rubbed finish.

| | | | | |
|--------------------------------|----------|------|-------------|----|
| BCSS/SC-45-28P | DESIGNED | DATE | DESCRIPTION | BY |
| CAS-45-28P | CHECKED | | | |
| TO BE USED WITH STANDARD PLANS | | | | |

STANDARD PLAN
20'-0" CONCRETE SLAB SPAN
 LIVE LOAD: H20-S16-44
 28'-0" ROADWAY
 45° CROSSING
 1'-6" SIDEWALKS
 PARABOLIC CROWN
 DATED: JUL 12, 1962

STATE OF LOUISIANA
 DEPARTMENT OF HIGHWAYS
 BRIDGE DESIGN SECTION

CSS15C-45-28P